



Restorative

Directa's products are developed, tested and evaluated by our selected team of highly-qualified and renowned Swedish and international dental professionals. The aim is to make life easier for all dental professionals in their daily clinical work.

DIRECTA

Confident preparations

High quality preparations made faster without tissue damage.

Protects the adjacent tooth

The protective shield and wedge helps avoid damage to adjacent tooth.

Pre-Separation

Facilitates the easy placement of a matrix and the establishment of a good contact.

Protects gingiva

The protective shield and wedge helps to avoid bleeding and damage to gingival tissue.

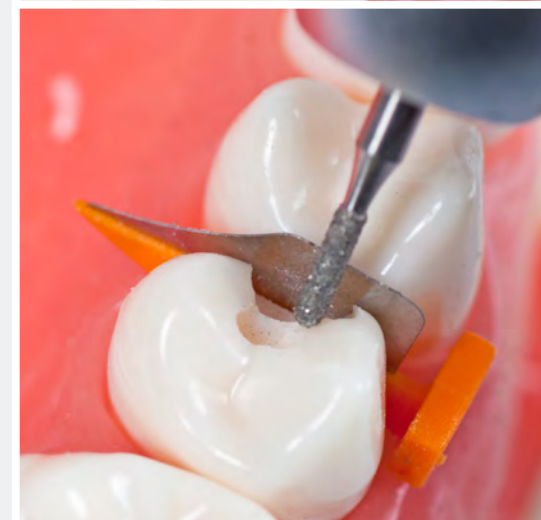


FenderWedge® Protects the adjacent tooth and gingiva during preparations

Bur damage to adjacent teeth is a common problem in everyday dental practice. Research shows that up to 70% of adjacent teeth incur damage during class II preparations. FenderWedge acts to prevent damage to the adjacent teeth and gingiva during these preparations. FenderWedge consists of a combined steel plate and plastic wedge, which facilitates easy application of the matrix.

Prod No	Product Description
602750	FenderWedge Assortment, 4x36 pcs
602751	FenderWedge Small, orange, 36 pcs
602752	FenderWedge Medium, green, 36 pcs
602753	FenderWedge Large, yellow, 36 pcs
602754	FenderWedge X-small, lilac, 36 pcs
602800	FenderWedge Value Pack, orange, 100 pcs
602801	FenderWedge Value Pack, green, 100 pcs
602802	FenderWedge Value Pack, yellow, 100 pcs
602803	FenderWedge Value Pack, lilac, 100 pcs
602679	FenderWedge & FenderMate Intro-Kit*, 8 & 20 pcs

*The Intro-Kit contains: FenderWedge x-small 3 pcs, small 3 pcs, medium 1 pc, large 1 pc. FenderMate, left narrow 8 pcs, left regular 2 pcs, right narrow 8 pcs, right regular 2 pcs.



Protects the adjacent tooth

The protective shield and wedge helps to prevent accidental damage to the adjacent tooth.

Confident crown and veneer preparations

High-quality preparations made faster with no damage to the papilla or adjacent tooth.

Boat-shaped wedge

Enables insertion into tight interproximal spaces. Compresses the gingiva to avoid bleeding and provides a sub-gingival preparation edge.

Optimal space and vision

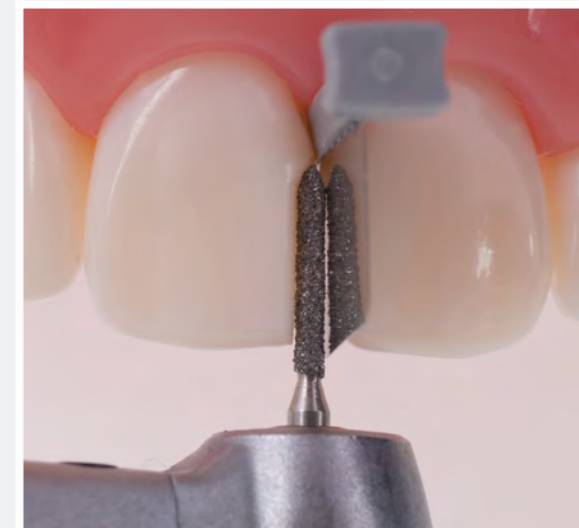
The protective shield is bendable for optimal work space and vision.



FenderWedge® Prep Protects the tooth and papilla during crown and veneer preparations

FenderWedge Prep is a plastic wedge with an inbuilt steel plate designed for larger preparations such as those for crowns, veneers and inlays. FenderWedge Prep improves the quality of preparations and helps save time due to increased vision and safety. FenderWedge Prep has a thin, "boat-shaped" tip which enables it to be inserted into tight proximal spaces. At the same time, it compresses the gingiva without causing damage, avoiding bleeding and delays in impression taking. The steel plate is perforated, allowing it to be bent before insertion to lean against the adjacent tooth, providing better access and vision.

Prod No	Product Description
602749	FenderWedge Prep, grey, 36 pcs
602811	FenderWedge Prep Value Pack, grey, 100 pcs



Predictable contact and anatomic shape

The pre-shaped contact adapts to the proximal surface and forms the optimal contact and anatomic shape.

One piece design

Matrix and wedge combined for easier and safer placement.

No cervical overhang

The wing design exerts pressure for maintained separation and cervical margin adaptation.

Designed for minimally invasive dentistry

Can be inserted interproximally with minimal preparation.



FenderMate® Sectional matrix for Class II composite restorations

FenderMate is a pre-curved, one-piece sectional matrix and wedge that provides for quick, safe and predictable composite restorations, with a tight contact and cervical sealing. FenderMate is designed to be inserted either buccally or lingually. The matrix reaches from the base of the wedge to just above the occlusal surface. The side of the wedge facing the adjacent tooth has an angled wing.

Prod No	Product Description
602770	FenderMate Assortment, 4x18 pcs
602771	FenderMate left regular, green, 18 pcs
602772	FenderMate left narrow, light green, 18 pcs
602773	FenderMate right regular, blue, 18 pcs
602774	FenderMate right narrow, light blue, 18 pcs
602804	FenderMate Value Pack, left regular, green, 100 pcs
602805	FenderMate Value Pack, left narrow, light green, 100 pcs
602806	FenderMate Value Pack, right regular, blue, 100 pcs
602807	FenderMate Value Pack, right narrow, light blue, 100 pcs
602679	FenderWedge & FenderMate Intro-Kit*, 8 & 20 pcs

*The Intro-Kit contains: FenderWedge x-small 3 pcs, small 3 pcs, medium 1 pc, large 1 pc. FenderMate left narrow 8 pcs, left regular 2 pcs, right narrow 8 pcs, right regular 2 pcs.



Non-stick coating

The amorphous diamond coating prevents adhesives from sticking to the surface. Pulling the matrix out after light curing is an effortless task.

Dark & matt surface

The dark and matt coating contrasts with the color of the composite resin and reduces light reflection. Clinicians can therefore perform restorations under excellent visual conditions.

One piece design

Matrix and wedge combined for easier and safer placement.

No cervical overhang

The wing design helps maintain proximal separation and ensures superior cervical adaptations.



FenderMate® D-Coat Dark & matt surface and non-stick coating

FenderMate D-Coat is the latest in the FenderMate series. The unique no-ring matrix system has now been redesigned with a multilayer diamond coating, combining a better visual contrast with anti-stick properties. Your high-quality Class II composite restorations can now be achieved without adhesion to the matrix, and the dark matt colour will facilitate your work by giving excellent contrast. Like the original FenderMate, the pre-curved matrix includes a contact point and comes attached to a specially designed wedge which allows for tight sealings with no overhang. FenderMate D-Coat is available in refill and assortments. The four colours allow for an easy distinction between left or right curve (green/blue), and wedge size (light = thin, dark = thick).

Prod No	Product Description
602994	FenderMate D-Coat Assortment, 4x18 pcs
602990	FenderMate D-Coat, left regular, green, 18 pcs
602991	FenderMate D-Coat, left narrow, light green, 18 pcs
602992	FenderMate D-Coat, right regular, blue, 18 pcs
602993	FenderMate D-Coat, right narrow, light blue, 18 pcs



Designed for temporary fillings

Minimizes overhang and bleeding.

Bendable

Curves around the tooth to create an acceptable anatomical shape and minimizes finishing.

Easy placement

Facilitates high-quality, fast treatments.

One piece design

Designed to be used for protection and as a matrix for temporary fillings of any material.



FenderMate® Temp Protection and matrix for temporary restorations

FenderMate Temp is the all-in-one solution for safe and easy preparation and filling of temporary proximal restorations. FenderMate Temp is a stainless-steel matrix attached to a plastic wedge and can be easily inserted into the proximal area before preparation. It protects the adjacent tooth from unnecessary damage and minimizes contamination of blood from the gingival pocket. After preparation, FenderMate Temp can be easily curved to follow the tooth anatomy, facilitating precise fillings and minimizing the risk of problems caused by overhangs on temporary restorations.

Prod No	Product Description
602786	FenderMate Temp, lilac, 18 pcs
602813	FenderMate Temp Value Pack, lilac, 100 pcs



Designed for primary teeth

The optimized proportions ensure predictable results.

Easy placement

Facilitates high quality, fast and secure treatments.

Bendable

Adapts to the curvature of the tooth for a more natural anatomic shape. Minimal finishing required.

One piece design

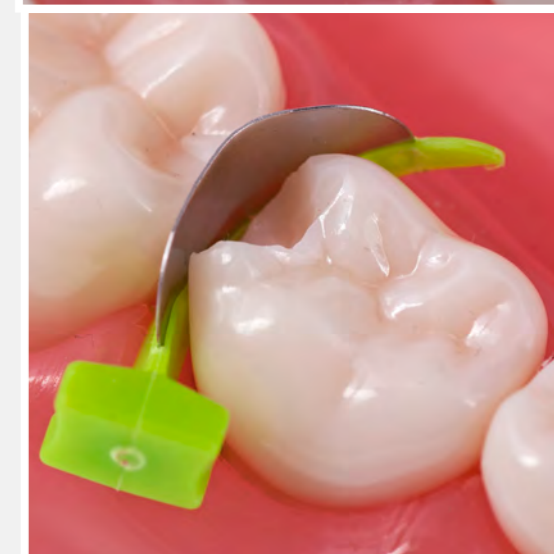
Designed to be used for protection during preparation and as a matrix for Class II fillings on primary teeth.



FenderMate® Prime Protective and easy matrix for primary teeth

FenderMate Prime uniquely combines a preparation shield and matrix for use in Class II fillings of primary teeth, where quick and simple solutions are highly valued. It is composed of an interproximal plastic wedge with an inbuilt steel plate. The “boat-shaped” tip allows the gingiva to be compressed without causing damage and reduces the risk of bleeding. FenderMate Prime is available in two sizes; long and short. FenderMate Prime green (long) is bendable and can be shaped to the contour of the tooth. FenderMate Prime yellow has a shorter, more rigid plate for very tight interproximal spaces.

Prod No	Product Description
602815	FenderMate Prime Assortment, 2x18 pcs
602816	FenderMate Prime Short, neon yellow, 18 pcs
602817	FenderMate Prime Long, neon green, 18 pcs
602808	FenderMate Prime Value Pack, Short, neon yellow, 100 pcs
602809	FenderMate Prime Value Pack, Long, neon green, 100 pcs



Deep curvature

The distinct curvature is suitable for diastema closure. By pushing/pulling the matrix, it is easy to find a suitable position for every tooth.

Shallow curvature

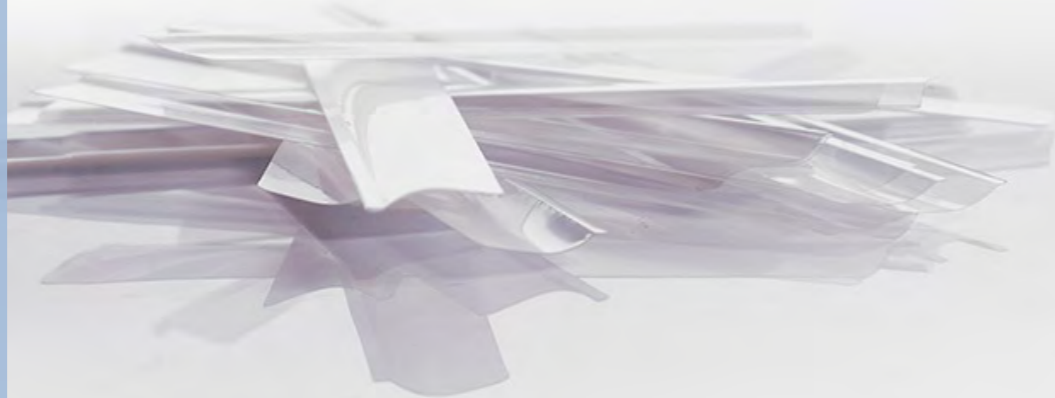
The shallow curvature on one end of the matrix makes it suitable for all teeth, even lower anteriors which have a less profound anatomical profile.

Cervical edge

The cervical edge slides easily into the gingival sulcus and follows the interdental papilla, forming a new contour and closing the diastema without creating black triangles. The cervical edge also seals the cavity and prevents moisture contamination from the surrounding tissues.

3D contour matrix

Progressive contour, allowing one matrix to be suitable for all anterior fillings.



ProxyPal® Specially designed for diastema closure and treatment of black triangle disease

Proximal curvature differs from tooth to tooth. To achieve a perfect filling in every situation, the ProxyPal matrix has been designed so that the curvature of the matrix increases linearly along its total length. On one end, the curvature is subtle, making it ideal for mandibular incisors. On the other end, the matrix curvature is more distinct, making it suitable for closing diastemas. By pushing/pulling on the matrix, it is easy to find a suitable position for every tooth. ProxyPal has a cervical edge which inserts into the soft tissue pocket. This edge minimizes moisture contamination of the cavity from the surrounding tissues and ensures that the matrix is stable during insertion of the filling material. Indications for use: Class IV, Large Class III, closure of diastemas.

Prod No	Product Description
604092	ProxyPal, 3D Anterior Matrix, 36 pcs



Exact indication for adjustment of C&B work

Spotit simplifies adjustment of C&B work by providing an exact indication of where contact points occur.

Optimal access

Access is optimal with both straight and angled designs available.

Easy handling

Easy to use, with no assistance required. Time-saving and accurate.

Clear indication

Leaves no marks outside the contact area.



Spotit® C&B contact adjustment

Identifying contact points on crowns and bridges has never been easier! Before cementation of conventional crowns, bridges and implant prosthetics, it is necessary to assess the relationship of the crown to the neighbouring teeth. Occlusal paper is often used to check the contact point; however, this method often results in an inaccurate contact point that is too broad. This can lead to excessive adjustment, resulting in a contact point that is too large. Directa's product, Spotit, is a coloured marker that is available on both a straight and angled handle. As the marker traverses the contact between the prosthetic element and the adjacent tooth, it leaves a clear and accurate indication of the adjustment required to achieve a perfect contact point. The whole procedure can be performed without assistance, as the crown can be held with one hand and the marker with the other. Spotit allows for easy identification of contact points on crowns and bridges in a clear and accurate manner.

Prod No	Product Description
690112	Spotit Assortment, 9+9 pcs
690110	Spotit Refill straight, 18 pcs
690111	Spotit Refill angled, 18 pcs



Clearly detectable

ANA Etching Gel is a bright blue enamel and dentine etchant with 37% phosphoric acid.

Etching gel with perfect texture

ANA Etching Gel stays in place without collapsing. It has a texture perfect for any etching technique and a consistency that allows for precise application.

Ideal viscosity for precise application

The ideal viscosity in combination with the blue colour enables very precise and clearly detectable placement. The thin bendable needle helps with accurate application.

Easy to rinse off

ANA Etching Gel is very easy and fast to rinse off, resulting in no phosphoric acid left in the cavity.



ANA Etching Gel 37% phosphoric acid

ANA Etching Gel is an enamel and dentine etchant with a concentration of 37% phosphoric acid. Its texture is perfect for any method of etching, allowing it to be easily used for enamel-only or total etch techniques.

ANA Etching Gel stays in place without collapsing, and the ideal viscosity of the product, in combination with the blue colour, enables very precise placement. The thin, bendable needle allows for accurate application, and the excellent consistency allows the gel to be easily and quickly rinsed off, leaving no phosphoric acid in the cavity.

Prod No	Product Description
1510400	ANA Maxi-Pack, 10 x 2ml
1510500	ANA Application Tip, 100 pcs





Restorative

Design By Dentists

Directa's products are developed, tested and evaluated by our selected team of highly-qualified and renowned Swedish and international dental professionals. The aim is to make life easier for all dental professionals in their daily clinical work.

DIRECTA

DIRECTA AB

P.O. Box 723,
194 27 Upplands Väsby, SWEDEN
+46 8 506 505 75

DIRECTA INC

64 Barnabas Road, Unit 3
Newtown, CT 06470, United States
203.491.2273

DIRECTA GERMANY

Hammergutstr. 11
92245 Küssmersbruck, GERMANY

info@directadental.com
www.directadental.com
www.directadentalgroup.com
www.facebook.com/directadental
www.instagram.com/directadental
www.youtube.com/user/DirectaAB

2022-07-05_REV01

DirectaDentalGroup

DIRECTA **topdental** **ORSING** **parkell** **physics**
RØNVIG TrollDental **Sendoline** **contactEZ**